

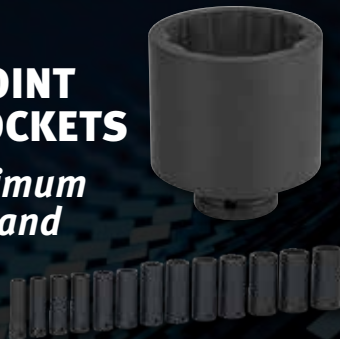
# INNOVATION AT WORK

**NEW!**

## 1/2" DRIVE 12 POINT DEEP IMPACT SOCKETS

*Designed for Maximum engagement on 6 and 12 point fasteners*

See Page 9



## TRADE KITS

*Get your work done faster, easier and safer*

See Page 7



**NEW!**

## REVERSIBLE RATCHETING COMBINATION WRENCHES

*Wrench handle is sized for optimum comfort and balance for increased leverage, especially in tight spaces*

See Page 9



THE WORLD'S LARGEST MANUFACTURER OF **PROFESSIONAL TORQUE WRENCHES**



## COMPUTORQ SG ELECTRONIC TORQUE WRENCH

*Torque in less time, with more accuracy and control*

See Page 2



# CDI TORQUE PRODUCTS® DIGITAL TORQUE TESTER™ (DTT)

Test the health of your torque wrenches anywhere with the digital torque tester.

Utilizing the testing protocol and standards developed by the American Society of Mechanical Engineers (ASME)

The **Digital Torque Tester™ (DTT)** is designed to be an affordable torque tester that can be mounted on a wall or used in a bench-top vise to allow the operator to conveniently test torque wrenches and torque screwdrivers. It features an easy to use touch pad screen to capture peak torque values during a test in real time, and download stored torque data to a PC. All DTT torque testers are sold in a kit with the tester, carrying case and AC/DC power supply.

Product Code	Female Drive	Range English	Range cNm, Nm	Range, kgcm	List Price:	Sale Price:
10002-I-DTT	3/8 in.	100 - 1000 in.lb.	11.3 - 113 Nm	115 - 1152 cmkg	<del>\$3,313.75</del>	<b>\$1,420.19</b>
1001-I-DTT	1/4 in.	10 - 100 in.lb.	113 - 1113 cNm	11.5 - 115 cmkg	<del>\$2,804.32</del>	<b>\$1,201.86</b>
1001-O-DTT	1/4 in.	10 - 100 in.oz.	7.06 - 70.6 cNm	.720 - 7.20 cmkg	<del>\$2,871.92</del>	<b>\$1,230.83</b>
2502-I-DTT	3/8 in.	25 - 250 in.lb.	2.82 - 28.25 Nm	28.80 - 288.0 cmkg	<del>\$3,001.16</del>	<b>\$1,286.21</b>
2503-F-DTT	1/2 in.**	25 - 250 ft.lb.	33.8 - 338 Nm	3.45 - 34.5 kgm	<del>\$3,313.75</del>	<b>\$1,420.19</b>
4002-I-DTT	3/8 in.	40 - 400 in.lb.	4.52 - 45.2 Nm	46 - 460 cmkg	<del>\$3,001.16</del>	<b>\$1,286.21</b>
501-I-DTT	1/4 in.	5 - 50 in.lb.	56 - 565 cNm	5.76 - 57.60 cmkg	<del>\$3,001.16</del>	<b>\$1,286.21</b>
6004-F-DTT	3/4 in.	60 - 600 ft.lb.	81.3 - 813 Nm	8.30 - 83 kgm	<del>\$3,563.88</del>	<b>\$1,527.37</b>
8001-O-DTT*	1/4 in.	20 - 800 in.oz.	14.1 - 565 cNm	1.44 - 57.6 cmkg	<del>\$2,877.87</del>	<b>\$1,233.37</b>

Accuracy: ± 0.50% 10% to 100% CW & CCW of indicated test value @ 25° C  
 \*Accuracy: ± 1% CW & CCW from 2-1/2% to 100% of full scale. New for Torque Screwdriver.  
 Units of Measure: Nm, kgcm, ft.lb., in.lb., in.oz., kgm, cNm  
 Operation Modes: TRACK, PEAK, FIRST PEAK  
 Operating Temperature: 10 to 32° C (50 to 90° F)  
 Storage Temperature: -20 to 50° C (-2 to 122° F)  
 Humidity: 85% Relative Humidity @ 21° C (70° F)  
 Power Supply: Included 9-volt A/C D/C adapter. 6 AA batteries included.  
 Data Storage/Recall: Memory Capacity - 500 Records (Complete Check Mode Only)  
 Dimensions: W - 10" x H - 16" x D - 2.5"  
 Weight: (Tester Only) - 10.7 lbs., (with Carrying Case) - 17.4 lbs.  
 \*\* Includes 1/2" - 3/8" Reducer



# CDI TORQUE PRODUCTS® COMPUTORQ SG-STEEL GRIP ELECTRONIC TORQUE WRENCH

## CONVENIENCE & CONTROL

COMPUTORQ SG TORQUE WRENCHES are fully programmable for reliable, consistent, and repeatable torque application. Every model features a large, backlit LCD screen for better visibility in a variety of working conditions and a high capacity memory for storage of 1,500 readings.

Product Code	2401CASG	1002CASG	2503CASG	6004CASG
Square Drive	1/4"	3/8"	1/2"	3/4"
Head Type	Sealed Flex Head	Sealed Flex Head	Sealed Flex Head	Sealed Fixed Head
Torque Range, in lb	12-240	60-1200	150-3000	360-7200
Torque Range, ft lb	1-20	5-100	12.5-250	30-600
Torque Range, Nm	1.4-27.2	6.8-135.6	16.9-339	40.7-813.5
Torque Accuracy	+/- 2% Clockwise; +/- 3% Counterclock-wise	+/- 2% Clockwise; +/- 3% Counterclock-wise	+/- 2% Clockwise; +/- 3% Counterclock-wise	+/- 2% Clockwise; +/- 3% Counterclock-wise
Angle Range	0-360 Degrees	0-360 degrees	0-360 degrees	0-360 Degrees
Storage Capacity	1,500 Readings	1,500 Readings	1,500 Readings	1,500 Readings
Number of Presets	50	50	50	50
All Steel Body	Yes	Yes	Yes	Yes
Batteries Included	3 x AAA Lithium	3 x AA Lithium	3 x AA Lithium	3 x AA Lithium
Storage Case Included	Yes	Yes	Yes	Yes
Ratchet Service Kit	0514-0029-01RK	0514-0030-01RK	0514-0031-01RK	9610-0112RK
Head Depth (A)	3/4" (19.3 mm)	1-1/32" (26.19 mm)	1-3/10" (33.02 mm)	2-4/5" (71.12 mm)
Head Width (B)	15/16" (23.8 mm)	1-7/10" (43.18 mm)	1-1/2" (63.5 mm)	2-3/5" (66.04 mm)
Warranty	1-Year	1-Year	1-Year	1-Year
List Price:	<del>\$1,343.73</del>	<del>\$1,606.65</del>	<del>\$1,811.12</del>	<del>\$3,739.09</del>
<b>Sale Price:</b>	<b>\$575.89</b>	<b>\$688.57</b>	<b>\$776.20</b>	<b>\$1,602.47</b>



All models comply with ISO®-6789-2003 and ASME® B107.300-2010 (B107.28) Standards for Electronic Torque Instruments  
 \*U.S. and Foreign Patents Pending



## ELECTRONIC DIAL TORQUE WRENCH

The new **Electronic Dial (ED)** torque wrench features solid-state electronics for accurate torque application and measurement. ED's design provides easy set-up and usage. There is no need to look directly at the digital readout as the wrench features 3 indicating lights and an audible buzzer.

The ED wrench has unsurpassed reliability and durability -- 21st century technology in a simple, easy to read digital torque wrench.



## ELECTRONIC DIAL TORQUE WRENCH

Product Code	Drive	In. Lb.	Ft. Lb.	Nm	Kg. Cm.	Length In. (mm)	Wt. Lbs. (kgs)	List Price:	Sale Price:
501ED-CDI	¼"	5 - 50	.42 - 4.17	.56 - 5.65	57 - 57.61	11.5 (292)	1.25 (.57)	\$1,271.61	<b>\$544.97</b>
2502ED-CDI	¾"	25 - 250	2.08 - 20.83	2.82 - 28.25	28 - 280.03	14.5 (368)	1.51 (.68)	\$1,152.53	<b>\$493.94</b>
6002ED-CDI	¾"	60 - 600	5 - 50	6.79 - 67.79	69 - 691.27	14.5 (368)	1.51 (.68)	\$1,204.39	<b>\$516.17</b>

### Features

- 4 units of measure...ft lb, in lb, Nm, kg.cm.
- Accuracy: ± 2% CW & ± 3% CCW - of indicated value from 20% to 100% of full scale
- 3 step LED visual signal system  
YELLOW LIGHT = approaching target torque  
GREEN LIGHT = target torque reached  
RED LIGHT = over torque indicator
- Audible tone when desired torque is reached
- Alarm tone sounds if wrench is overtorqued
- Ergonomically designed wrench body
- Display can be turned 180 degrees to allow left hand usage
- Battery cover designed to be aviation FOD proof
- Holds "peak" torque reading for 10 seconds
- Constructed of special Capron® material for long life and durability
- Resistant to the majority of chemicals used in industrial environments
- Wrench can be hung on tool board
- Bar graph displays orientation of torque application (left or right hand)
- Uses standard 9 volt alkaline battery
- N.I.S.T. traceable certificate of calibration included
- Meets or exceeds ASME B107.28 – 2005



## CDI TORQUE PRODUCTS QUICK SET SPLIT BEAM TORQUE WRENCHES

Product Code	Drive Size	Range	Increments	Length (inches)	Ratchet	List Price:	Sale Price:
502TQFR	¾"	120-600 in. lbs.	10.0 in. lbs.	17 ½"	Flex-Head	<del>\$881.72</del>	<b>\$377.89</b>
1002TQFR	¾"	20-100 ft. lbs.	2.0 ft. lbs.	17 ½"	Flex-Head	<del>\$847.72</del>	<b>\$363.31</b>
2503TQFR	½"	40-250 ft. lbs.	5.0 ft. lbs.	21 ¼"	Flex-Head	<del>\$654.72</del>	<b>\$280.60</b>
4004TQR	¾"	130-400 ft. lbs.	10.0 ft. lbs.	38 ½"	Fixed-Head	<del>\$1,326.44</del>	<b>\$568.47</b>
6004TQR	¾"	200-600 ft. lbs.	10.0 ft. lbs.	48 ½"	Fixed-Head	<del>\$1,388.07</del>	<b>\$594.89</b>



See complete product listing at [snaon.com/industrialbrands](http://snaon.com/industrialbrands)



## HEAVY DUTY SERVICE CARTS

### Heavy Duty Industrial Cart

Product Code	Description	List Price:	Sale Price:
50726	4 Drawer Heavy Duty Industrial Cart	\$1,643.73	<b>\$704.46</b>

### Service Carts Overall Dimensions

Product Code	Width (Inches)	Depth (Inches)	Height (Inches)
50726	30	20 1/2	40 1/2

### Drawer Sizes

Number	Width (inches)	Depth (inches)	Height (inches)
2	11	19 1/8	3
1	25	16 1/4	3
1	25	16 1/4	6 5/8

### Features

- Heavy duty steel construction
- High gloss power coat scratch resistant paint
- Quality swivel casters on all units
- Drawer units have 45 mm "secure latch" ball bearing slides



50726



## SERVICE CARTS

Easy and convenient access to tools when and where you need them.

Product Code	Description
50721	2 Drawer with Lockable Lid & Tray, Black
50722	2 Shelves, Red
50723	2 Shelves with Locking Drawer, Red
50724	4 Drawers with Lid, Rack and Shelf, Red

### Service Cart Overall Dimensions

Product Code	Width (inches)	Depth (inches)	Height (inches)	List Price:	Sale Price:
50721	45 1/2 with a lid	16 1/2	36	\$793.42	<b>\$340.04</b>
50722	30	17	36 7/32	\$355.00	<b>\$152.14</b>
50723	30	17	36 7/32	\$516.93	<b>\$221.54</b>
50724	41	17	36 7/32	\$1,083.70	<b>\$464.44</b>

### Features

- High gloss powder coat paint is scratch & chemical resistant
- Storage drawers for frequently used tools
- Heavy duty undercarriage to help support bottom tray load
- 18 gauge heavy duty steel
- 4" x 1" swivel casters



50721



50723



50722



50724

## WILLIAMS® JOB SITE BOXES

Designed for the toughest outdoor work environments

Product Code	Description	List Price:	Sale Price:
50950	32" W X 19" D X 17.5" H	<del>\$637.34</del>	<b>\$273.14</b>
50951	42" W X 20" D X 23.4" H	<del>\$806.54</del>	<b>\$345.66</b>
50952	48" W X 24" D X 27.5" H	<del>\$980.62</del>	<b>\$420.26</b>
50953	48" W X 30" D X 33.5" H	<del>\$1,169.67</del>	<b>\$501.29</b>
50954	48" W X 30" D X 28.375" H	<del>\$1,593.42</del>	<b>\$682.90</b>

### Features

- Casters weight capacity is 3500 lbs
- Tough industrial powder coating finish
- Heavy 16 gauge steel construction with 12 gauge feet
- Recessed and concealed locking area protects padlock for ultimate security against drills and bolt cutter
- Fully welded seams provide maximum strength
- Recessed side handles for easy transportation
- Reinforced overlapping lid provides protection from weather and forced entry
- Heavy duty industrial lid stays prevents accidental closure
- Tread plate design for rugged durability



50950



## WILLIAMS® HEAVY-DUTY ROAD BOXES - 26" AND 34"

Designed with extra heavy-duty features for mobile use in the factory or on the road in service trucks.

Product Code	Description	List Price:	Sale Price:
50946B	26" W X 17.875" D X 22" H	<del>\$1,244.01</del>	<b>\$533.14</b>
50946RED	26" W X 17.875" D X 22" H	<del>\$1,244.01</del>	<b>\$533.14</b>
50947B	34" W X 17.875" D X 23" H	<del>\$1,565.21</del>	<b>\$670.80</b>

### Features

- Drop front panel has neoprene water & dust resistant seal.
- Shielded hinges for long life in harsh environments.
- Cushion feet pads attached to bottom for protection.
- Extra heavy duty metal with 75 lb load rating per drawer.
- Secure key internal locking system.
- 50946RED includes a padlock eye with slotted hasp provides security



50946B



50946RED

## MODULAR INDUSTRIAL STORAGE

### UNPRECEDENTED STORAGE OPTIONS TO ACCOMMODATE ANY STORAGE NEED

The Williams® Modular Industrial Storage Program is designed, engineered and built specifically for industrial settings, processes, and systems. Heavy-duty steel construction, innovative safety and security features, and workplace-specific configurations provide for customizable, scalable storage that meets even the most complex needs.

### WORK SURFACES

Available in a variety of shapes and materials.



### Color Options

	Red: Standard
	Black: B
	Blue: BL



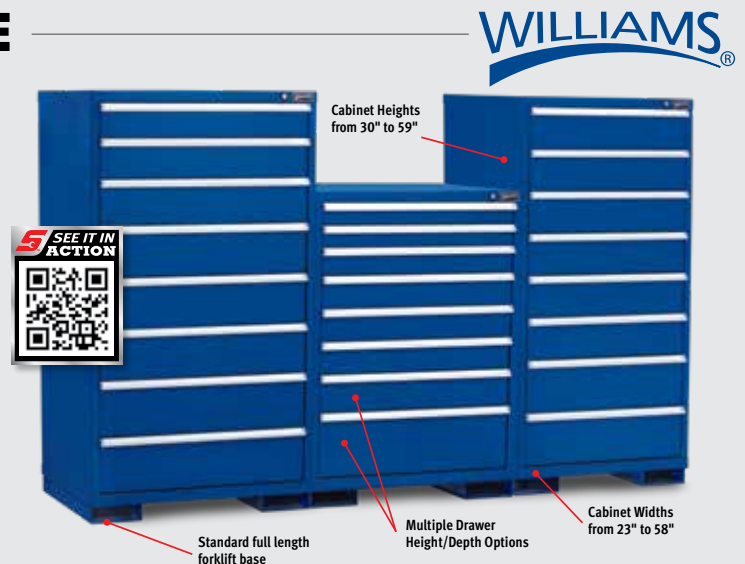
100% View  
Drawer Extension



Full-Width Aluminum  
Handles with Safety  
Overlap and 45° Angle



SWP Plus Series -  
32-1/2" Wide



Ask your Snap-on Industrial Brands Representative for full options & pricing!

See complete product listing at [snapon.com/industrialbrands](http://snapon.com/industrialbrands)



## DROP PREVENTION A Critical Challenge... SOLVED!

When professionals use tools while working at height, bad things can happen: tools can fall, damaging equipment, interrupting work, and injuring people.

In response to the dangers presented by dropped objects, Snap-on developed **Tools@Height**, a tethered tool system for applications involving work being performed at height, and anywhere dropped or lost objects are a concern.



### 45 PIECE TOOLS@HEIGHT STARTER SET

Product Code	Description	List Price:	Sale Price:
WSC-45-TH	45 Piece Tools@Height Starter Set	\$3,335.76	<b>\$1,429.61</b>



### 27 PIECE TOOLS@HEIGHT STARTER SET

Product Code	Description	List Price:	Sale Price:
WSC-27-TH	27 Piece Tools@Height Starter Set	\$2,523.89	<b>\$1,081.67</b>



### 225 PIECE TOOLS@HEIGHT INTERMEDIATE MAINTENANCE SERVICE SET

Product Code	Description	List Price:	Sale Price:
WSC-225-TH	Complete Tools@Height Intermediate Tool Set (223 Pieces Total)	\$17,148.10	<b>\$7,349.19</b>



### 116 PIECE TOOLS@HEIGHT GENERAL MAINTENANCE SERVICE SET

Product Code	Description	List Price:	Sale Price:
WSC-116-TH	Complete Tools@Height General Service Tool Set Only (116 Pieces Total)	\$9,650.64	<b>\$4,135.99</b>



### 72 PIECE TOOLS@HEIGHT BASIC MAINTENANCE SERVICE SET

Product Code	Description	List Price:	Sale Price:
WSC-72-TH	Complete Tools@Height Basic Maintenance Tool Set in Safe Bucket	\$6,675.56	<b>\$2,860.96</b>



# TRADE KITS

- BAHCO Trade sets provide a complete set of tools for basic maintenance, electricians, plumbers and general purpose
- Each set contains tools needed to help you keep your equipment working and get your work done faster, easier and safer.



4750-UP-1TS5



4750PTB65TS4



## 13 PIECE BASIC MAINTENANCE KIT

Product Code	Description	List Price:	Sale Price:
4750-UP-1TS5	13 Piece Basic Maintenance Kit	<del>\$360.91</del>	<b>\$154.67</b>

Kit contains an assortment of pliers, screwdrivers, adjustable wrenches and combination wrenches



## 18 PIECE GENERAL PURPOSE KIT

Product Code	Description	List Price:	Sale Price:
4750PTB65TS4	18 Piece General Purpose Kit	<del>\$410.41</del>	<b>\$175.89</b>

Kit contains an assortment of screwdrivers, hammers, tape measure and knives



3100TBTS4



4750FB3-12TS4



## 24 PIECE PLUMBERS KIT

Product Code	Description	List Price:	Sale Price:
3100TBTS4	24 Piece Plumbers Kit	<del>\$775.23</del>	<b>\$332.24</b>

The kit is geared for industrial plumbers. It includes an assortment of hand tools such as screwdrivers, wrenches, hacksaws and tube cutters



## 35 PIECE ELECTRICIAN'S KIT

Product Code	Description	List Price:	Sale Price:
4750FB3-12TS4	35 Piece Large Electrician's Kit	<del>\$820.32</del>	<b>\$351.57</b>

Packed in an Electrician's Bag with an assortment of pliers, screwdrivers, adjustable wrench, combination wrenches, files and knife

See complete product listing at [snapon.com/industrialbrands](http://snapon.com/industrialbrands)



## SCREWDRIVER KITS

- Three Component Comfort Grip Handles
- Chrome blades prevent corrosion and can be easily cleaned



### 4 PIECE CABINET TIP SCREWDRIVER SET



#### Three Component Comfort Grip Handles

Product Code	Description	List Price:	Sale Price:
24002A	4 Piece Cabinet Tip Screwdriver Set	\$52.32	<b>\$22.43</b>

#### Contents Include:

Product Code	Overall Length (Inches)	Blade Length (Inches)	Tip Width (Inches)
24201A	6 11/16	4	1/8
24207A	6 13/16	3	3/16
24211A	9 3/4	6	3/16
24213A	13 11/16	10	3/16



### 6 PIECE PHILLIPS® SCREWDRIVERS SET



#### Three Component Comfort Grip Handles

Product Code	Description	List Price:	Sale Price:
24012A	6 Piece Phillips Screwdrivers Set	\$93.60	<b>\$40.11</b>

#### Contents Include:

Product Code	Overall Length (Inches)	Blade Length (Inches)	Tip Width (Inches)
24247A	3 7/8	1 1/2	1
24249A	5 1/16	3	1
24251A	3 3/8	1 1/2	2
24253A	8 1/4	4	2
24257A	12 1/8	8	2
24259A	10 9/16	6	3



### 6 PIECE TORX® SCREWDRIVER SET



#### Three Component Comfort Grip Handles

Product Code	Description	List Price:	Sale Price:
24010A	6 Piece TORX® Screwdriver Set	\$83.43	<b>\$35.76</b>

#### Contents Include:

Product Code	Overall Length (Inches)	Blade Length (Inches)	TORX® Size
24263A	7 1/4	4	T10
24265A	7 1/4	4	T15
24267A	7 3/4	4	T20
24269A	8 1/4	4	T25
24271A	8 1/4	4	T27
24273A	8 1/4	4	T30

PLS-17



### 17 PIECE COMBINATION PLIER SET

Product Code	Description	List Price:	Sale Price:
PLS-17	17 Piece Combination Plier Set	\$757.39	<b>\$324.60</b>

#### Contents Include:

Product Code	Description	Handle Type
23102	8" Slip Joint	Double Dipped Plastic Handles
23105	9 3/4" Groove Joint	Double Dipped Plastic Handles
23107	15 3/4" Groove Joint	Double Dipped Plastic Handles
23407	7" Heavy Duty Diagonal Cutting	Double Dipped Plastic Handles
23409	6 1/4" Bent Nose	Double Dipped Plastic Handles
23411	8" long nose	Double Dipped Plastic Handles
23503	8 1/4" Multi-Purpose Wire Cutter	Double Dipped Plastic Handles with Curved Wire Cutter
23542	5 1/2" Mini Wire Cutter	Double Dipped Plastic Handles with Curved Wire Cutter
23603	9" Heavy Duty Linesman	Double Dipped Plastic and Bi-Mold Comfort Grip Handles
2628G-180	7" Ergo Side Cutting Combination	Ergonomically Designed Handles
2971G-250	10" Water Pump	Double Dipped Plastic Handles
2979D-180	7" Nut Gripping	Heavy Duty Design with PVC Grips
PL-146C	6 1/2" Duck Bill	Double Dipped Plastic Handles
PL-167	7 1/2" End Cutting	Double Dipped Plastic Handles
PL-211BC	11" Bent Nose	Double Dipped Plastic Handles
PL-211C	11" Long Reach Chain Nose	Double Dipped Plastic Handles
PL-411C	11" Extra Long Diagonal	Double Dipped Plastic Handles

PLS-6A



### 6 PIECE GENERAL SERVICE PLIERS SET

#### Double-Dipped Plastic Handles

Product Code	Description	List Price:	Sale Price:
PLS-6A	6 Piece General Service Pliers Set	\$211.88	<b>\$90.80</b>

#### Contents Include:

Product Code	Description
PL-1519C	5" utility superjoint
PL-1520C	10" utility superjoint
PL-46C	6" diagonal cutting
PL-76C	6 1/2" chain nose side cutters
2628G-180	7" side cutting
23503	8 1/4" front-end stripper



# NEW INNOVATIVE PRODUCTS



## 1/2" DRIVE DEEP IMPACT SOCKETS, 12 POINT, SAE



Product Code	Size (Inches)	List Price:
14-1216	1/2	\$18.59
14-1218	9/16	\$19.18
14-1220	5/8	\$19.18
14-1222	11/16	\$19.18
14-1224	3/4	\$20.80
14-1226	13/16	\$20.80
14-1228	7/8	\$24.64
14-1230	15/16	\$24.64
14-1232	1	\$28.08
14-1234	1-1/16	\$32.11
14-1236	1-1/8	\$38.68
14-1238	1-3/16	\$40.30
14-1240	1-1/4	\$42.32



## 1/2" DRIVE DEEP IMPACT SOCKETS, 12 POINT, MM



Product Code	Size (Inches)	List Price:
14M-1210	10	\$20.02
14M-1211	11	\$20.02
14M-1212	12	\$20.15
14M-1213	13	\$20.15
14M-1214	14	\$20.67
14M-1215	15	\$21.06
14M-1216	16	\$21.06
14M-1217	17	\$21.78
14M-1218	18	\$22.10
14M-1219	19	\$22.56
14M-1220	20	\$23.34
14M-1221	21	\$26.33
14M-1222	22	\$26.65
14M-1223	23	\$27.95
14M-1224	24	\$29.06
14M-1225	25	\$31.14
14M-1227	27	\$31.72
14M-1229	29	\$33.28
14M-1230	30	\$34.39
14M-1232	32	\$34.52
14M-1233	33	\$37.70

### Features

- SUPERTORQUE lobular openings for greater turning power without deforming the fastener
- Designed for Maximum engagement on 6 and 12 point fasteners
- Suitable for use with pneumatic and electric impact wrenches
- Specially heat treated for impact use to provide long life, safety and durability



## REVERSIBLE RATCHETING COMBINATION WRENCHES



### High Polish Chrome Finish, 12 Point, SAE

Product Code	Size	OAL	List Price:
121ORCU	5/16	5-7/8	\$56.49
1212RCU	3/8	7-1/32	\$59.28
1214RCU	7/16	7-5/8	\$59.54
1216RCU	1/2	8-11/16	\$63.05
1218RCU	9/16	9-1/4	\$67.41
1220RCU	5/8	10-9/32	\$72.67
1222RCU	11/16	10-29/32	\$75.53
1224RCU	3/4	12	\$82.03
WS-1170RCU	7 Pc. Set: 3/8, 7/16, 1/2, 9/16, 5/8, 11/16, 3/4		\$500.83



### High Polish Chrome Finish, 12 Point, MM

Product Code	Size	OAL	List Price:
1208MRCU	8	149	\$58.37
1209MRCU	9	164	\$59.67
1210MRCU	10	179	\$536.63
1211MRCU	11	194	\$60.13
1212MRCU	12	207	\$56.03
1213MRCU	13	221	\$60.26
1214MRCU	14	235	\$63.96
1215MRCU	15	249	\$66.89
1216MRCU	16	261	\$72.67
1217MRCU	17	277	\$75.47
1218MRCU	18	291	\$74.88
1219MRCU	19	305	\$78.72
MWS-10RCU	10 Pc. Set: 10, 11, 12, 13, 14, 15, 16, 17, 18, 19		\$698.04



### Features

- SUPERCORBO® open end & SUPERTORQUE® box opening
- Ratcheting gear features up to 80 teeth, minimizing swing arc in tight spaces
- Longer length, wrench handle is sized for optimum comfort and balance, providing increased leverage, especially in tight spaces
- Low profile, easy-action, reverse lever won't get in your way
- Box ends are offset 15 degrees for knuckle clearance



## WOBBLE EXTENSIONS

Product Code	Drive	Length	List Price:
M-202	1/4	2	\$11.05
M-203	1/4	3	\$12.35
M-206	1/4	6	\$16.25
M-211	1/4	11	\$22.75
B-201	3/8	1	\$11.05
B-203	3/8	3	\$14.30
B-206	3/8	6	\$19.18
B-208	3/8	8	\$22.43
B-211	3/8	11	\$27.30
B-218	3/8	18	\$58.83
S-202P	1/2	2	\$19.50
S-205P	1/2	5	\$25.35
S-211P	1/2	11	\$37.05
S-220P	1/2	20	\$64.35



### Features

- Chrome plating provides increased protection from rust and corrosion
- Provides 16" of additional accessibility



See complete product listing at [snapon.com/industrialbrands](http://snapon.com/industrialbrands)

# SOCKET AND DRIVE TOOL SETS



MSM-30HFTB



**30 PIECE 1/4" DRIVE SOCKET AND DRIVE TOOL SET**

6 Point Metric, Packed in Exclusive Keep-Safe-Foam System with Metal Box

**Contents Include:** Drive Tools, Shallow 6 Point Sockets sizes: 4mm to 14mm, Deep 6 Point Sockets sizes: 4mm to 14mm

MSM-30HFTB List Price: \$465.13 **Sale Price: \$199.34**



WSM-38HFTB



**38 PIECE 1/4" DRIVE SOCKET AND DRIVE TOOL SET**

6 & 8 Point SAE, Packed in Exclusive Keep-Safe-Foam System with Metal Box

**Contents Include:** Drive Tools, Shallow 6 Point Sockets sizes: 5/32" to 9/16", Deep 6 Point Sockets sizes: 3/16" to 9/16", Shallow 8 Point Sockets sizes: 1/4" to 3/8", Screwdrive Bit Sockets

WSM-38HFTB List Price: \$607.33 **Sale Price: \$260.29**



WSB-23HFTB



**23 PIECE 3/8" DRIVE SOCKET AND DRIVE TOOL SET**

6 Point SAE, Packed in Exclusive Keep-Safe-Foam System with Metal Box

**Contents Include:** Drive Tools, Shallow 6 Point Sockets sizes: 3/8" to 7/8", Deep 6 Point Sockets sizes: 3/8" to 7/8"

WSB-23HFTB List Price: \$440.93 **Sale Price: \$188.97**



WSS-18HFTB



**18 PIECE 1/2" DRIVE SOCKET AND DRIVE TOOL SET**

6 Point SAE, Packed in Exclusive Keep-Safe-Foam System with Metal Box

**Contents Include:** Drive Tools, Shallow 6 Point Sockets sizes: 3/8" to 1-1/4"

WSS-18HFTB List Price: \$502.05 **Sale Price: \$215.17**



**15 PIECE 3/8" DRIVE SOCKET AND DRIVE TOOL SET**

**Contents Include:** Ratchet, Extensions, Universal Joint, Shallow 12 Point Sockets sizes: 8 mm to 19 mm.

50663 List Price: \$71.76 **Sale Price: \$30.76**



**16 PIECE 3/8" DRIVE SOCKET AND DRIVE TOOL SET**

**Contents Include:** Ratchet, Extensions, Universal Joint, Shallow 12 Point Sockets sizes: 8 mm to 19 mm.

50665 List Price: \$71.04 **Sale Price: \$30.44**



**12 PIECE 1/2" DRIVE SOCKET AND DRIVE TOOL SET**

**Contents Include:** Ratchet, Extensions, Shallow 12 Point Sockets sizes 1/2" to 1-1/8"

50667 List Price: \$95.62 **Sale Price: \$40.99**



**12 PIECE 1/2" DRIVE SOCKET AND DRIVE TOOL SET**

**Contents Include:** Ratchet, Extensions, Shallow 12 Point Sockets sizes: 12 mm to 24 mm.

50669 List Price: \$89.26 **Sale Price: \$38.26**



**AUTHORIZED DISTRIBUTOR**

**Snap-on** INDUSTRIAL BRANDS



Offer Valid While Supplies Last  
April 1, 2018 - July 31, 2018

**A.C.T. EQUIPMENT SALES LTD.**  
www.actequipment.com  
Toll Free 1-800-667-1504

Burnaby (604) 294-6271	Edmonton (780) 462-1777	Calgary (403) 279-6016
Saskatoon (306) 244-4810	Winnipeg (204) 783-3210	